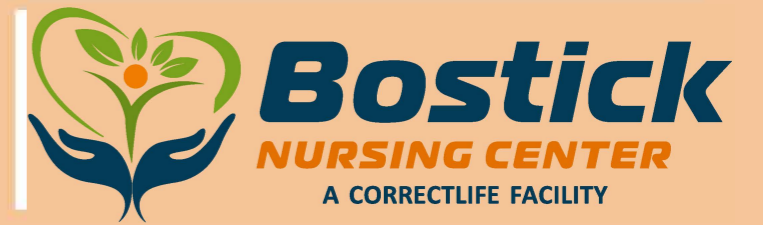




**Committed to Providing a Model Healthcare Environment**

We specialize in high acuity residents who require skilled nursing care 24 hours, 7 days a week. Residents at our facility receive the following healthcare services:

- 24-hour skilled Nursing Services
- Individualized Care Programs
- Geriatric Care
- Advanced Wound Care Services
- Respiratory Services
- Physical / Occupational / Speech Therapy
- Behavioral Health Counseling
- Hospice Services
- IV Therapy
- Peritoneal Dialysis
- Enteral feeding
- Dialysis Care Coordination
- Pain management
- Restorative care
- Ostomy services
- Podiatry Services
- Dental Services
- Oncology Care
- Bariatrics
- Pulmonary Rehab
- Diabetes Treatment



**For Referrals Contact:**  
**Erica Pettigrew**  
[erica.pettigrew@correctlife.com](mailto:erica.pettigrew@correctlife.com)

**Bostick Nursing Center**  
**1700 Bostick Circle**  
**Milledgeville, GA 31061**  
**Office: 478-414-9600**  
**EFax: 866-242-3378**  
**Website: correctlife.com**



**We Provide High-quality Skilled Healthcare & Support in a Warm, Caring Environment**



[www.correctlife.com](http://www.correctlife.com)

# Our Facility Complies Fully With All State and Federal Agency Requirements

## We Care For Your Present and Future Healthcare Needs

We don't judge your past for admission. Your acceptance is solely based upon whether your medical conditions meet a nursing home's standard of care. Bostick Nursing Center located in Milledgeville Georgia is a state-of-the-art **280-bed skilled nursing facility** dedicated to serving those who need long-term and short-term care placement.

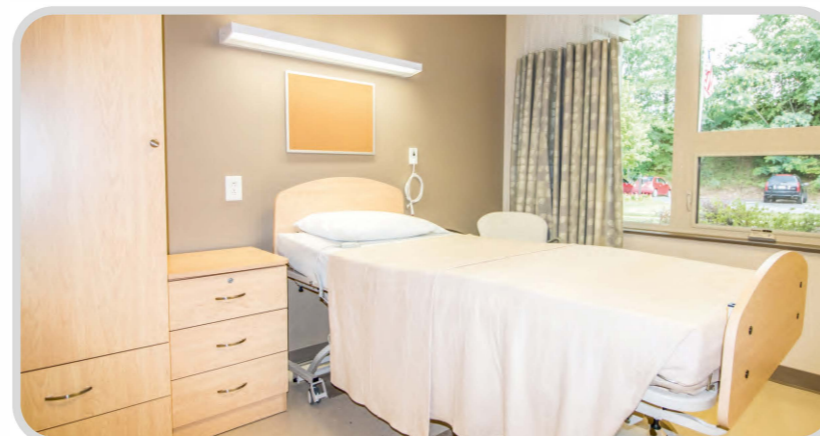
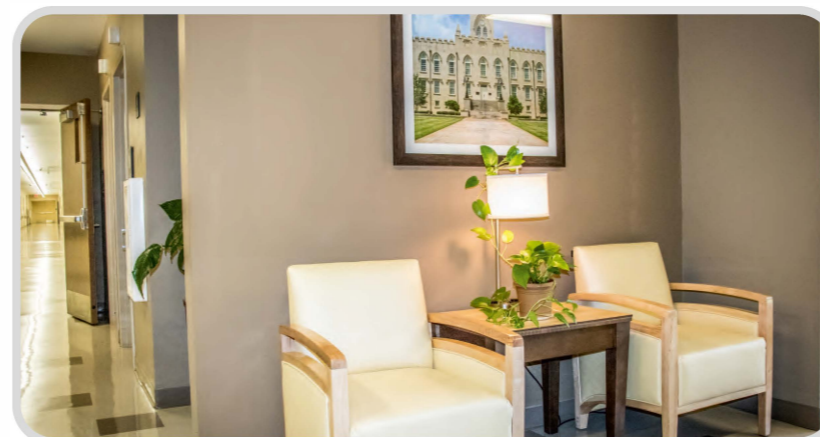
## Our Team Provides High-Quality Skilled Healthcare in a Supportive Environment

We pride ourselves in providing quality skilled nursing services in a home-like environment which promotes the highest quality of life for that individual.

## The Bostick Advantage

Bostick Nursing Center is uniquely qualified to serve our residents as result of:

- Higher nursing staff to patient ratios
- Full-time nurse practitioner on staff
- Admissions process is designed to address the lack of traditional resources to complete admissions documentation



## Our Facility is Uniquely Designed for Our Residents

We provide quality healthcare in a warm, caring supportive environment. Divided into 8 separate units and 16 nursing stations, the design of our facility allows us to group residents as necessary to ensure appropriate environments of care as well as to provide dedicated units for conditions such as Alzheimer and Dementia.

Each unit is comprised of single and double occupancy bedrooms. Each bedroom has a handicap accessible bathroom which includes a wheel chair accessible shower. Every resident is furnished with an electric hospital bed, wardrobe, nightstand, television and an individual cable hookup. High speed internet is available free of charge to all residents. Each unit has two large sitting areas with large screen televisions, and a comfortable quiet sitting room for private conversations, reading and family visitations.

Our unique layout includes a landscaped interior courtyard on each unit allowing our residents to socialize and enjoy the benefits of being outside without leaving their unit. Each courtyard is wheel chair accessible and includes shaded patio areas, groomed lawn areas and paved walkways.

